



ANNUAL REPORT 2021 2022



*E hāpai ana i te tipu o ngā tamariki
Supporting the well-being of children*



Our Mission

To support educational, environmental, social and cultural development for vulnerable children and whānau.

Our Purpose

Support the well-being of children to their cultural identity, alleviate poverty and reconnect with the environment.

Our Function

Interrupt the inter-generational cycle of disadvantage ensuring all children have access to quality education and opportunities, developing long-term leadership and self-reliance.

CONTENTS

INTRODUCTION

- 3 Message from the Board
- 3 Acknowledgements

OUTCOMES

- 5 PwC Xmas with Moko Club
- 5 Whānau health
- 6 Thank you Paul Greenberg
- 7 Project delivery locations
- 8 Access project
- 8 Winter warmth project
- 9 Matariki
- 9 Tui Trust on the move
- 9 Covid-19

PERFORMANCE

- 10 Operations at a glance

OUR SUPPORTERS

- 11 Sponsors list
- 11 Charity details
- 11 Get involved
- 11 How can we help?
- 12 Looking forward

SERVICE PERFORMANCE

- 14 Compilation report
- 15 Statement of service performance



*Kōwhai, Moko Club,
Kōwhai Family
Start and Tui Trust
celebrate Xmas,
December 2021*

Nau mai Haere Mai

Welcome to our Annual Report which showcases the work we do and the effect we have on the communities we serve. The Trust financial accounts were prepared by Baker Tilly Staples Rodway Chartered Accountants and show that the activity has focused on educational and health projects for disadvantaged children and whānau particularly in high needs communities. We have many organisations and people to thank and a numerous changes to reminisce. Embracing challenges and change throughout 2021 was the theme of the year for the Trust. Navigating Covid challenges, accessing key educational facilities and relocating our office to name a few. We managed to deliver projects in the Waikato/Hamilton communities which we elaborate on further in the report.

We welcomed to our team Fran Mitchell and Elsa Wrathall in October 2021 following the resignation of Mandeep Sidhu. Craig Barrett, partner at Baker Tilly Staples Rodway appointed Carol Pereira—thank you Craig for sponsoring our new advisor who provided our Year End Accounts 2022. The sale of Kōwhai Consulting Ltd meant we moved premises from the picturesque rural Ruakura location to Hamilton East Hayes Paddock, hectic but exciting changes. The Trust's legal address remains at Baker Tillery Staples Rodway, Victoria St, Hamilton.

Special acknowledgement

We would like to thank Tania Simpson, retired director/owner of Kōwhai Consulting Ltd. Tania sold her company along with both Moko Club's in November 2021. Tania provided office space and office equipment, plus administration support the Trust needed to operate for many years. We are grateful Tania, thank you for your support; pictured left is our farewell lunch, aka the last supper December 2021. The Trust will continue to support Moko Club where possible i.e. mid 2022 we started a project with Moko Club Ngāruawāhia building a new covered outside woodworking area. We will miss our old friends and morning tea's at the café. While saying farewell we were notified with amazing news that Trust Waikato would sponsor our generational change literacy project.

Generational change with Trust Waikato

Over the next three years we will focus on high-risk neurodiverse children struggling with the basics, particularly those struggling with literacy/Reo English—children who are considered 'very poor readers' for their age and level. We will provide support with the goal to improve educational and life outcomes for each child. There will be attention given to tamariki with developmental, neurological, learning and behavioural differences/disabilities which affects their ability to learn. We plan to have a *focus group* of children on board by the end of 2022 and expand our reach in the following two years. Our long-term goal is to support these same children throughout their entire educational journey particularly at key milestones.

We know from our Child Clinician Study 2017 that whānau dealing with social dysfunctions or issues impact negatively on tamariki; and tamariki with behavioural issues are commonly trauma based. We aim to assist children who have complex developmental and behavioural issues with diagnostics and support. It is crucial that all children are educated in a way that;

(a) best suits their learning needs; and; (b) will positively impact their educational journey.

It is estimated that one in 20 New Zealanders have ADHD, and data from the Ministry of Health suggests that ADHD should be considered a major public health problem of childhood. It requires initiatives to reduce long-term inequity as much as possible as well as to allow individuals to achieve their full potential. We have an estimated one in seven children in New Zealand who are neurodiverse, dyslexic, autistic or face other learning challenges. These children do not learn easily with the current Balanced Literacy approach predominantly used throughout NZ to teach reading; which means thousands of children are struggling each year. If we can identify children with learning challenges early, we can ensure they receive evidenced based intervention/instruction.

For example, a neurodiverse or dyslexic child may need explicit structured literacy lessons to learn effectively. In May 2022 the MOE launched a *Best Start Literacy programme* for children with learning differences, but this roll out takes time as teachers need to be trained; and the programme is only available to new entrants (or Year 0/1)¹ therefore, schools, teachers and parents outside these parameters are still financing the extra costs.

The cost to introduce, learn and teach explicit and systematic literacy programme is significant for schools, as is private tuition for whānau, but without intervention, children with learning disabilities will continue to fail and feel frustrated, whānau continue to be stressed and unheard, teachers and teacher-aides are overwhelmed. It is our belief if child has a *specific diagnosis* this will help them and those around them understand; educators will know at the outset each child's challenges. At the very least a child will *know* that he or she is neurodiverse, and in turn help build confidence and self-esteem - the flow on effect of understanding and successfully treating challenges and diverse learning disabilities is profound.

Enhancing the intergenerational well-being of children and whānau/families

Sponsorship will assist us to deliver our mission and purpose on a large scale; assisting whānau with support they need to ensure tamariki don't just turn up to school, but that they have equal opportunity, thrive and confidently engage in a meaningful education. We are thrilled to be in a position where we can administer a literacy programme plan which is critically required to address the inequities of education in the areas we support.

Tui Trust continues to support the work for children and whanau to alleviate poverty and increase educational outcomes for vulnerable tamariki in the Waikato. Overall the Board is pleased with the progress of the Trust and look forward to supporting more community based projects in 2022-2023. If you have any queries, please email us tuitrust@hotmail.com Thank you to all our sponsors and supporters, we couldn't do our mahi without you and we appreciate your support.

Ngā Mihi Nui, Tui Trust Board

¹At the time of publication of this report



Thank you PwC staff for supporting Moko Club at Christmas time 2021



PwC sponsors Moko Club Xmas again in 2021! We would like to thank Jan Gatley and Logan King, PwC Hamilton for organising the Christmas gifts. The process is personalised for each child, a list is supplied by Moko Club (below right), each child has picked two gifts for PwC staff to choose from. From there, the PwC Hamilton staff go shopping for the gifts, they are wrapped and named for every child. This year due to Covid-19 restrictions we were unable to hold a Christmas party with Santa, the children and kai, therefore Jan and her team organised 26 Christmas hampers for each family to take home! On behalf of Moko Club, tēnā rawa koe me koutou katoa, thank you very much. Pictured on page four are the gifts outside the lift at PwC, packing the car and arriving at Moko Club. Pictured left are the gifts with Kaiako and tamariki in the playground at Moko Club.

Age	Gender	Option 1	Option 2
4	g	Princess Dress ups	disney Princesses
4	b	Spiderman	
2	g	Playdough set	tea set
3	b	Batman Toy	Paw Patrol (Rubble)
4	g	Dolls/Babies	Dress-ups
3	b	Batman Toy	
4	b	Spiderman toy	skateboard
4	g	Dolls/Babies	Blocks
4	b	scooter	lego
5	g	make up	pop its
2	b	Kid cleaning set	Le broom
5	b	motorbikes	dinosaur
4	g	Moana toy	Princess Dress ups
3	b	Trucks	Trains
4	g	Playdough Set	
4	g	Pepper Pig	Dress ups
3	b	Dumpruck	Cars
4	b	Spiderman toy	skateboard
4	b	Neef Gun	Blocks/Duplo
3	b	Hulk Smash	
4	b	Trucks	Trains
3	g	Phone/Toy	Birds
3	g	blocks	dress ups
2	b	Scooter	Trucks



Delivery of food baskets and voucher in Huntly

\$10,000

Total funds raised

40⁺

Women benefitted from this project

Note: at the time of publication this project is on going

Acknowledging women and girls during Covid-19, 2021

The COVID-19 lockdowns had a disproportionate effect on women/wāhine and girls/kōtiro in Aotearoa, including job losses, increased caring work and increased family violence. In order to support organisations to continue to support women, the Minister for Women, Hon Jan Tinetti, announced a COVID-19 Community Fund in 2021. Tui Trust is grateful to the Ministry for Women for assisting us with a grant that supported and celebrated wāhine and kōtiro in the Waikato who face significant hardship. We would like to thank Donna and Kallua from Kōwhai Family Start who delivered special food baskets and vouchers to at-risk wāhine and kōtiro in Ngāruawāhia, Huntly and Taupiri; and thank you to Piki and Lee from the Trust for distributing packages in Hamilton, Maeroa, Kawhia, Te Kuiti, Otorohanga and Pio Pio.

SPONSORED BY MINISTRY FOR WOMEN

'she gives her all in all she does, always giving and helping others, lost job during covid, these gifts helped build her self-esteem and confidence, self care, something for herself!'

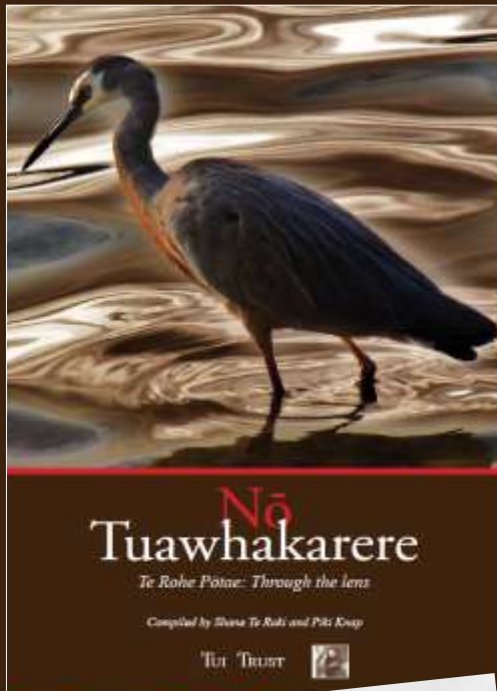
'she struggled with health issues, lack of engagement with professionals and midwife, young mum with no transport, this lifted her spirits able to purchase xmas kai for young children and self.'

'she was homeless, became unemployed, whānau breakdown, this brought shine to her week, she is worthy of great things, and some joy, in such sad and hard times.'

'she works with youth in the community, she reinforces the importance of tauteka and awhi and also delivers great messages to young people. This helped her support her whānau during an outbreak in Te Kuiti.'

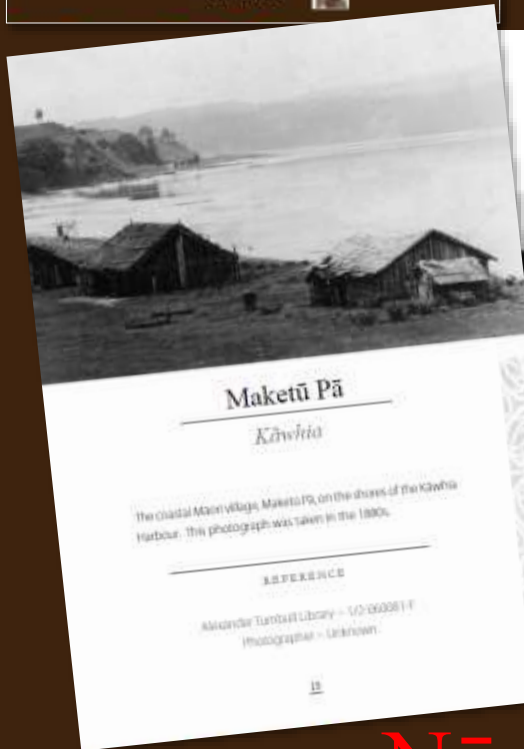
Thank you

Paul Greenberg for selling Nō Tuawhakarere



We would like to say thank you to Paul Greenberg and Joan Roulston, Greene Phoenix Marketing, for their tireless championing and selling over 100 copies over the last 5 years of our book *Nō Tuawhakarere* published by Tui Trust in 2017. Paul spent his life representing books for sale to bookshops all over New Zealand, and to this day is remembered and much appreciated for his endless enthusiasm and energy with all he did in the book trade over his decades involved in it.

In 2016 Paul was awarded the *New Zealand Book Industry Lifetime Achievement Award* and was on many book committees over the years. Joan affectionally says, "Often when I am talking on the phone to a bookseller they will say that they were only talking about Paul recently, as a topic came up that he was passionate about, or had been instrumental in assisting someone." We are grateful to Paul and Joan for working so hard to sell our books.

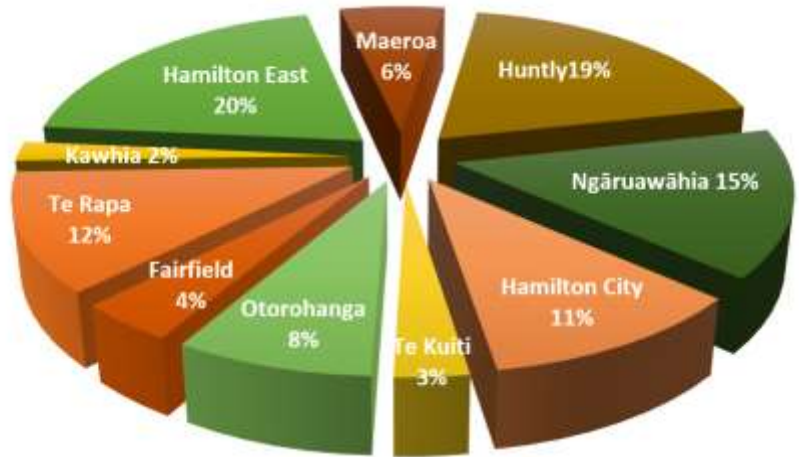


Nō Tuawhakarere

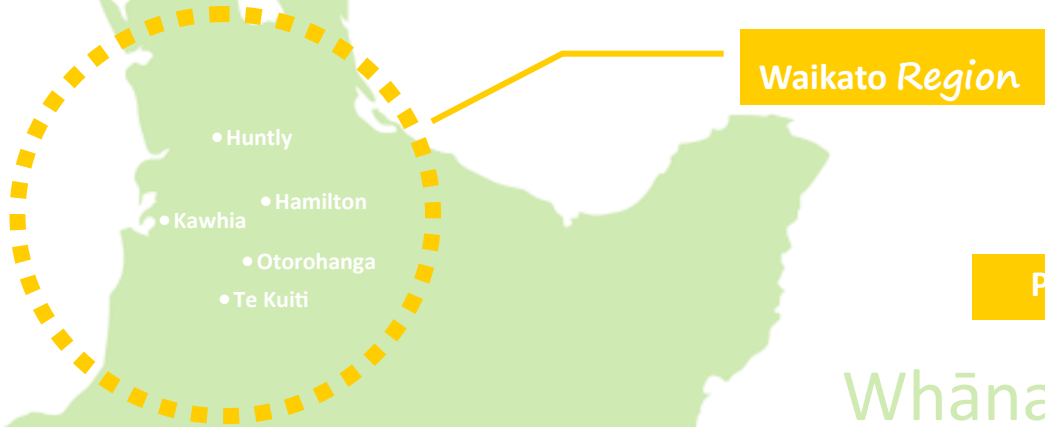
Te Rohe Pōtae: Through the Lens—Compiled by Shane Te Ruki and Piki Knap

The images contained in this publication represent only a small part of taonga photographs that are held in library, museum and private collections throughout the country. This publication is merely the tip of the iceberg and captures a particular time and place in history. We hope that this publication raises awareness about historical images and their relevance and importance for whānau, hapū and iwi moving forward. Our intention is to inspire others to conduct their own research, collate and share images and information amongst tribal members so that our tūpuna stories and memories are not lost. We also hope that all those photographs that are stored in boxes, under beds, in the roof and wardrobe get to see the light of day again to tell their own stories and that these are preserved and passed on to future generations. For sale \$50.00 each www.tuitrust/shop

Areas we delivered our Projects



- Te Rapa
- Kawhia
- Hamilton East
- Maeroa
- Huntly
- Ngāruawāhia
- Hamilton City
- Te Kuiti
- Otorohanga
- Fairfield



Project List

Whānau Health
 Women's Support
 Winter Warmth
 Access to Education

Thank you to the Ministry of Health and the staff at the Waikato DHB for donating 15,000 masks and 400 bottles of sanitiser. These were distributed at a time when national stocks were low, to schools, marae, community houses, family and people in need.

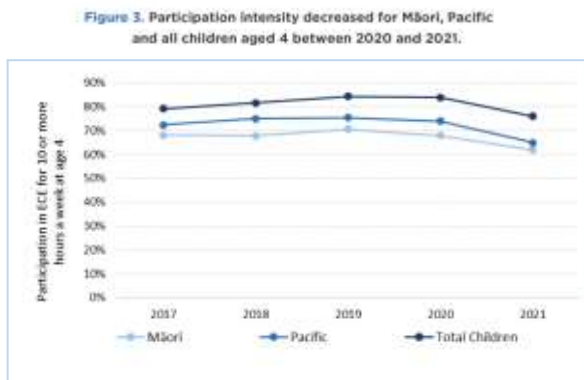
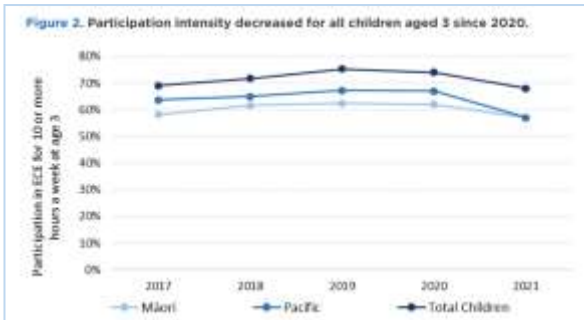
**Unite
 against
 COVID-19**



Access Project supporting whānau and tamariki at Moko Club

The 'Access Project' goals ensures that all children have access to quality childhood education. We assist families to address social issues that can impede tamariki participation. While ECE's were impacted by Covid-19 we continued to provide support to whānau.

- Advocating and mediating between families and WINZ.
- Covid information packs, FREE PPE including masks and sanitiser.
- Providing education awareness around Covid-19.
- Providing education around healthy living environments.



<https://www.educationcounts.govt.nz/statistics/participation>

Examples of Facilitation

- Connecting whānau with food banks and health care.
- Moko Club Huntly developed a strong relationship with the 'Hub' in Huntly and now works closely with them to assist whānau needing to access a variety of services.
- Ensure whānau receive and have access to the B4School Check information—a free health initiative for children under 5 years old delivered by the Ministry of Health.

Administrative Support

- Assist Moko Club Kaiako with compiling informative and engaging enrolment packs.
- Photography and design services that increase whānau engagement for special occasions like Christmas, Matariki and maintain and update the Moko Club website.
- Referrals to SSFI School Starter Pack on a child's 5th for both Moko Clubs, pick-up and deliver each pack to Moko Club prior to the child's birthday. Although referrals from the Trust will likely end in 2022 as the new owners take over, we can still offer support children during key transitions throughout education, particularly children with learning disabilities/differences that affects their ability to engage in NZ education and curriculum.

2021-2022

Although from November 2021 Moko Clubs have new owners and management, the Trust will continue to support their projects when we can. Early 2022 we started a project to support Moko Club Ngāruawāhia with a covered outdoor wood-work area and Moko Club Huntly with the purchase of learning resources. We will keep you updated with our projects.

SPONSORED BY D.V. BRYANT TRUST MULTI-YEAR FUNDING

Supporting whānau through Covid—winter warmth project

Thank you Jan Gatley (PwC) and D.V. Bryant for sponsoring our Winter Warmth Project for the second year in a row! The children at Moko Club were very happy and the parents grateful for your support.

\$2,500

72

Children benefit from this project

SPONSORED BY D.V. BRYANT TRUST and JAN GATLEY



Matariki June 2021

On the shortest day of 2021 we celebrated Matariki. Twinkling in the winter sky Matariki 'the Pleiades' signals the Māori New Year. The appearance of Matariki heralds a time of remembrance, joy and peace. It is time for whānau and communities to come together and celebrate. In 2022 Matariki was a public holiday for the first time and held on Friday June 24. While the public holiday will always be on a Friday, the date shifts each year to align with the maramataka—Māori lunar calendar. The dates for the next 30 years have been released. Thank you Jan Gatley for purchasing a variety of books and puppets for the children at Moko Club to celebrate Matariki 2021.

SPONSORED BY JAN GATLEY



Tui Trust moves office from Ruakura to Hamilton East, Nov 2021



Ruakura

With the announcement that Kōwhai Consulting Ltd was sold in November 2021 the Trust relocated from the Ruakura offices to Hayes Paddock, Hamilton East. Our legal registered address remains with Craig Barrett at Baker Tilly Staples Rodway at 354 Victoria St, Hamilton City and we will most likely have our future Board meetings at the Trust Waikato rooms. Thank you to everyone for their hard work during this transition. Pictured left our old office, pictured below new office with Noel Leeming setting up technology.

SPONSORED BY WEL ENERGY TRUST AND TRUST WAIKATO



Hamilton East

Supporting communities through Covid-19 Winter Warmth Project

Thank you to Vereana and Sean at Hamilton Holiday Homes for gifting over 100 blankets/duvets, high chairs, sheets, pillow cases, pillows, porta-cots, mattresses, tea, sugar and coffee which we distributed to families throughout the Waikato i.e. at Moko Clubs, Kōwhai Family Start, Marae and Community Houses.

SPONSORED BY HAMILTON HOLIDAY HOMES

Unite
against
COVID-19



Operations and Administration

Governed by the Board our administrator manages the day-to-day operations of our work. Kōwhai Consulting Ltd provided an office space (until November 2021) and facilities including a Board Room from which Tui Trust operates. We would like to thank our sponsors for supporting our administration, operations and resource development. This essential funding enabled our administrator to continue to focus on project development and delivery, accountability and communications and transmit this information to our funders. Social media

posts and regular newsletters is one way we do this (right).

We continued to develop our website which includes a sales page. We are grateful to our sponsors who have supported this much needed resource where we can connect with our audience and collate data from which we can improve. We are delighted to see our footprint gradually increasing—1,190 site visitors Sept 2021-Dec2021 is a record for us! *supply: google analytics*

SUPPORTED BY TRUST WAIKATO
LOTTERY GRANTS BOARD | HAMILTON CITY COUNCIL



Platform and device breakdown

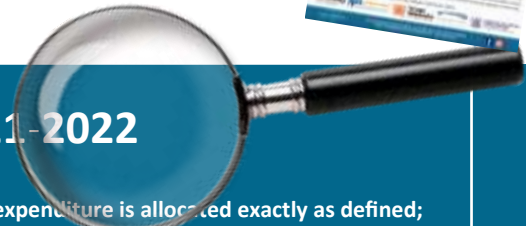
Platform and devices that people used to find your profile



How customers search for your profile



Administration scope of work at a glance 2021-2022



- Nov 2021 Relocate Tui Trust from offices at Ruakura and set-up new office in Hamilton East and inform all parties have our new contact information (phone, email, address), this includes sponsors, supporters, suppliers, Government Agencies, IRD, Charities Commission, on-line services, payroll and banking.
- Board Member advertising campaign that attracts new Board Members (2021) i.e. PwC OnBoard Programme.
- Develop and deliver projects that ensure all children have access to quality education and remove any barriers whānau face, to ensure whānau feel included in their community and children's education.
- Ensure our legal responsibilities are met.
- Plan and keep record of Board of Trustees meetings, minutes, agendas and plan AGM usually in September. Regular weekly hui with Board Chair ensuring goals are met.
- Ensure annual calendar is adhered to and reported each month to the Board of Trustees and actions are completed.
- Project development, management, funding applications, facilitation and accurate submission of audit reports.
- Ensuring our Strategic Plan is fit for purpose.
- Sponsor and supporters database contact details securely stored but easily accessed so that we can connect regularly; maintaining healthy relationships with people and manage growth.
- Keep detailed working calendar and evidence accountability.
- Ensure all funding expenditure is allocated exactly as defined; and ensure reports and audits are completed accurately and in a timely manner.
- Consult regularly to ensure that our projects are fit for purpose and amend as needed.
- Risk management survey is conducted to identify potential issues and sort these out before they become large issues; ensure our policies and procedures are up-to-date.
- Sponsor, supporter and audience communications, acknowledgements; regular newsletters and updates.
- Administration technology and data bases are fit-for-purpose, secure and safe and report effectively and efficiently.
- Regular website, FB social media maintenance and updates for Tui Trust to reach our wider audience.
- Plan strategically future sustainability i.e. continue working on our Tui Trust shop page where we can fund-raise on-line and sell products.
- Outcomes, do our best to collate evidence that the projects we deliver have impact and what this is. Enlist research organisation to conduct a study i.e. Huber Social.
- Research - ensure regular research and reading of published papers; i.e. State of the Nation 2021; Charities news and legislation releases; Ministry of Education publications particularly those related/addressing the failing rates of literacy in NZ. Ensure reading lists are created and time set aside for learning/PD.



We couldn't do it without you!

A special thanks

OUR SPONSORS

Trust Waikato
D.V. Bryant Trust
WEL Energy Trust
Tania Simpson
Jan Gatley
Hamilton City Council
Kōwhai Consulting
Lottery Grants Board
Ministry for Women
Ministry of Social Development

OUR PARTNERS

Bakertilly Staples Rodway
Hamilton
SSFI—School Start First
Impressions

MOKO CLUB CHAMPIONS

Hamilton Holiday Homes
PwC New Zealand Hamilton,
gifted Christmas presents

INDIVIDUAL SPONSORS

Cecilia Tarrant
Craig Barrett
Fonteyn Moses Te Kani
Jan Gatley
Llana Pickering
Michelle Alexander
Piki Knap
A big thanks to all the anonymous
contributors

Our sponsors through Give-A-Little

Get involved

We couldn't do what we do without our generous and expanding community of kind-hearted supporters. We'd love you to join us - and these are just some of the ways you can get involved.

DONATE

With just a single donation you can make a life changing difference to children with disabilities or learning differences
. Visit <https://givealittle.co.nz/org/tuitrust>

PROJECT SUPPORT

From 2022 our priority focus is lifting literacy rates for children with learning difficulties/differences. This is a costly investment while we wait for an education shake-up. In the meantime you could help us support child literacy here www.tuitrust.com

OPERATIONS SUPPORT

We are continually fundraising to ensure that our administration and operations can continue to deliver the services we provide. If you are interested in supporting our operations please email tuitrust@hotmail.com

Keep in touch!

www.facebook.com/TuiTrust

www.tuitrust.com

Can we help?

If you know of a vulnerable child or family that we could assist please email tuitrust@hotmail.com

Lifting literacy rates for Waikato children including those with learning diversities

At the time of publishing this Annual Report we were planning a conference at the Hamilton Gardens to gather Waikato teachers, leaders and whānau, due largely because of the scale of the issue of literacy. There shouldn't be any doubt about the literacy crisis we currently face; the image below is a snapshot of newspaper and published articles over a 6 month period in 2022. This is our conference outline:

“Lifting literacy rates for Waikato children including those with learning diversities. We invite leaders, teachers, teacher aides, parents and whanau to join us to learn how we can support struggling readers. We will discuss how we can support and teach children with learning disabilities/diversities using explicit, systematic, and sequential teaching of literacy at multiple levels. Facilitated by Mabel Wharekawa-Burt with guest speakers Dr Olwyn Johnston and Natalie Muller we aim to discover how we can best help schools, children and whanau to lift the literacy rates for struggling students. It is crucial that all children are educated in a way that; (a) best suits their learning needs; and; (b) will positively impact their educational journey. You will learn about the past, present and help plan the future for struggling readers who have the potential to be GREAT

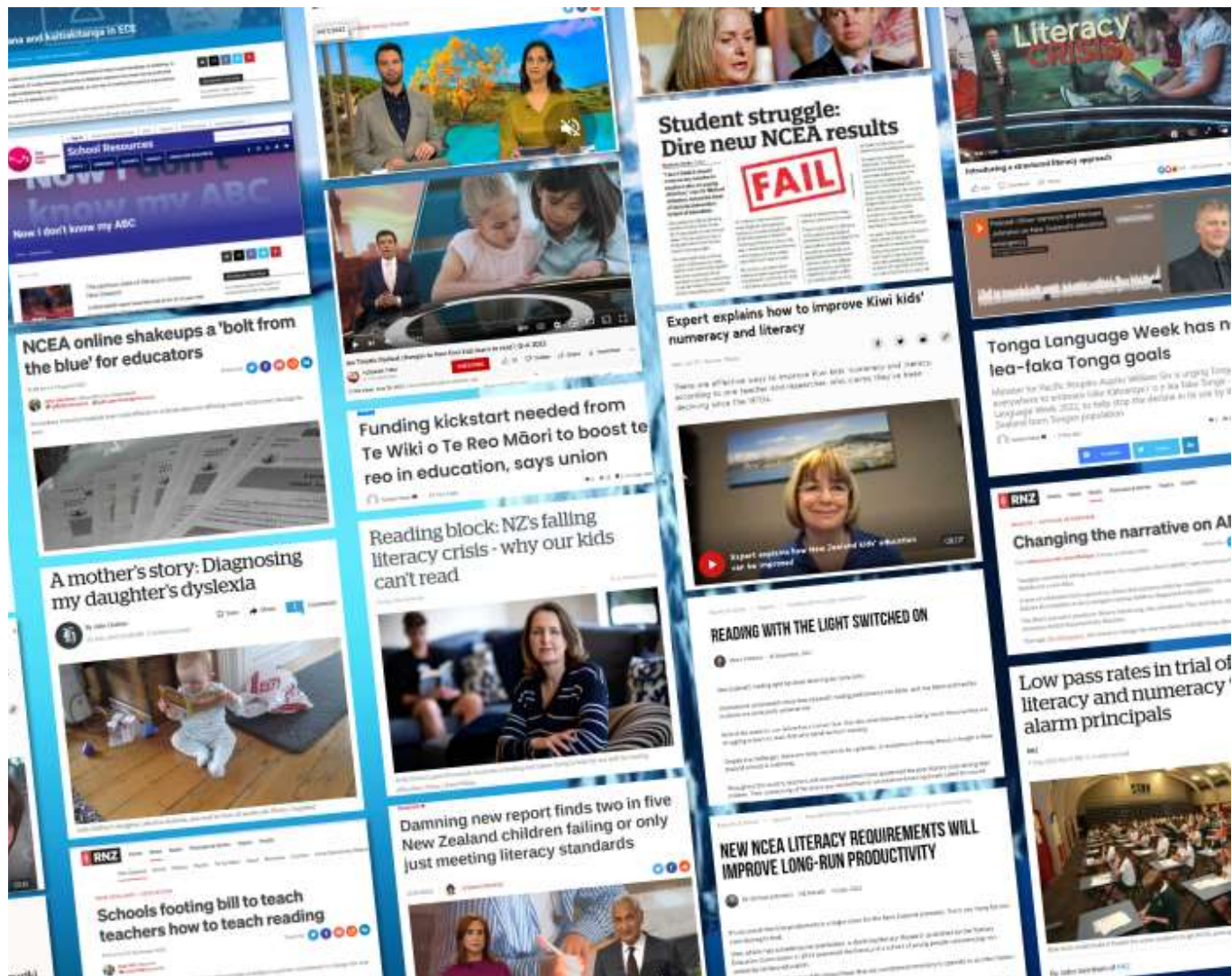
Creating a literate community
Join us to help lift literacy rates of tamariki including those with learning diversities/differences
10 am - 3 pm, Thursday October 13, 2022 at Hamilton Gardens, Hamilton

Facilitator: Mabel Wharekawa-Burt
Guest Speakers: Dr Olwyn Johnston, Natalie Muller

RSVP: By Friday October 7, 2022
Register / FREE Tickets from www.tuitrust.com

Agenda:
10:00 Welcome
10:15 Session: How literacy rates we get from a 100% literacy rate
10:30 Session: How can poor literacy affect a child's life?
11:00 Session: Three Current Issues including: Reading Difficulties and (SEND) needs, literacy & COVID
11:30 Session: What is the role of the teacher in supporting struggling readers?
12:00 Lunch
1:00 Session: How can we support struggling readers?
1:30 Session: How can we support struggling readers?
2:00 Session: How can we support struggling readers?
2:30 Session: How can we support struggling readers?
3:00 Session: How can we support struggling readers?

readers with the correct intervention. There are children in primary, intermediate and high school who cannot access the curriculum efficiently because they cannot yet read. For 10-15% of the population, the underlying causes of reading difficulties can often be as a result of the neurological differences. Join us to discuss how we can make the best investment for successful literacy outcomes for our children.” Filmed by Brian Mitchell at Screen and Audio Visual the outcomes of this hui will be on our website shortly after October 13, 2022. Full project brief www.tuitrust.com/ourwork





bakertilly

STAPLES RODWAY

TUI TRUST

FINANCIAL STATEMENTS

Performance Report

Tui Trust for year ended 2022

Prepared by Baker Tilly Staples Rodway Waikato LP

Compilation Report

Tui Trust For the year ended 31 March 2022

Compilation Report to the Directors of Tui Trust.

Scope

On the basis of information provided and in accordance with Service Engagement Standard 2 Compilation of Financial Information, we have compiled the financial statements of Tui Trust for the year ended 31 March 2022.

These statements have been prepared in accordance with the accounting policies described in the Notes to these financial statements.

Responsibilities

The Trustees are solely responsible for the information contained in this performance report and have determined that the accounting policies used are appropriate to meet your needs and for the purpose that the financial statements were prepared.

The financial statements were prepared exclusively for your benefit. We do not accept responsibility to any other person for the contents of the financial statements.

No Audit or Review Engagement Undertaken

Our procedures use accounting expertise to undertake the compilation of the financial statements from information you provided. Our procedures do not include verification or validation procedures. No audit or review engagement has been performed and accordingly no assurance is expressed.

Independence

We have no involvement with Tui Trust other than the preparation of financial statements and management reports and offering advice based on the financial information provided.

Disclaimer

We have compiled these financial statements based on information provided which has not been subject to an audit or review engagement. Accordingly, we do not accept any responsibility for the reliability, accuracy or completeness of the compiled financial information contained in the financial statements. Nor do we accept any liability of any kind whatsoever, including liability by reason of negligence, to any person for losses incurred as a result of placing reliance on this performance report.



Baker Tilly Staples Rodway Waikato LP
Chartered Accountants

Level 4 BNZ Building
354 Victoria Street
Hamilton

Dated: 22 September 2022



Statement of Service Performance

Tui Trust

For year ended 2022

“How it was funded?” and “What did it cost?”

Description of entity's outcomes:

The Trust purpose is to support the wellbeing of children using a holistic approach, which includes, the uplifting of cultural identity, the alleviation of poverty, and a reconnection with the environment. Tui Trust has a number of outcomes and our focus for 2022 relates to the following:

- Supporting vulnerable children and their families in the local community toward better educational and life outcomes.

Description and quantification of the entity's outputs:

1. The Trust serves its purpose by directly supporting impoverished families which are aligned with the purpose of the Trust. During the year ended 31 March 2022 the Trust contributed funds toward social service provision for families in Hamilton City, Te Kuiti, rural Hamilton, North Waikato region and Northland.
2. The Trust continues to support families struggling to provide the basics on their educational journey. We assist with provision of uniforms, equipment and tools children need to participate in education. The Trust supports positive experiences for tamariki through the key transitional periods.
3. The Trust funds social work to be undertaken in the Waikato in particular Huntly and Ngaruawahia to assist low socio-economic families access quality education. This work is not funded directly by the Ministry of Education and is subsidised by the Trust to enable better educational outcomes and social impacts for children and families.
4. The Trust supports Projects which aim to reduce barriers to learning and engage tamariki and whanau who are not participating in education.

Entity's structure:

Trustees:

Trustee and Interim Chair : Piki Knap

Trustee: Fonteyn Moses-Te Kani

Trustee: Fran Mitchell

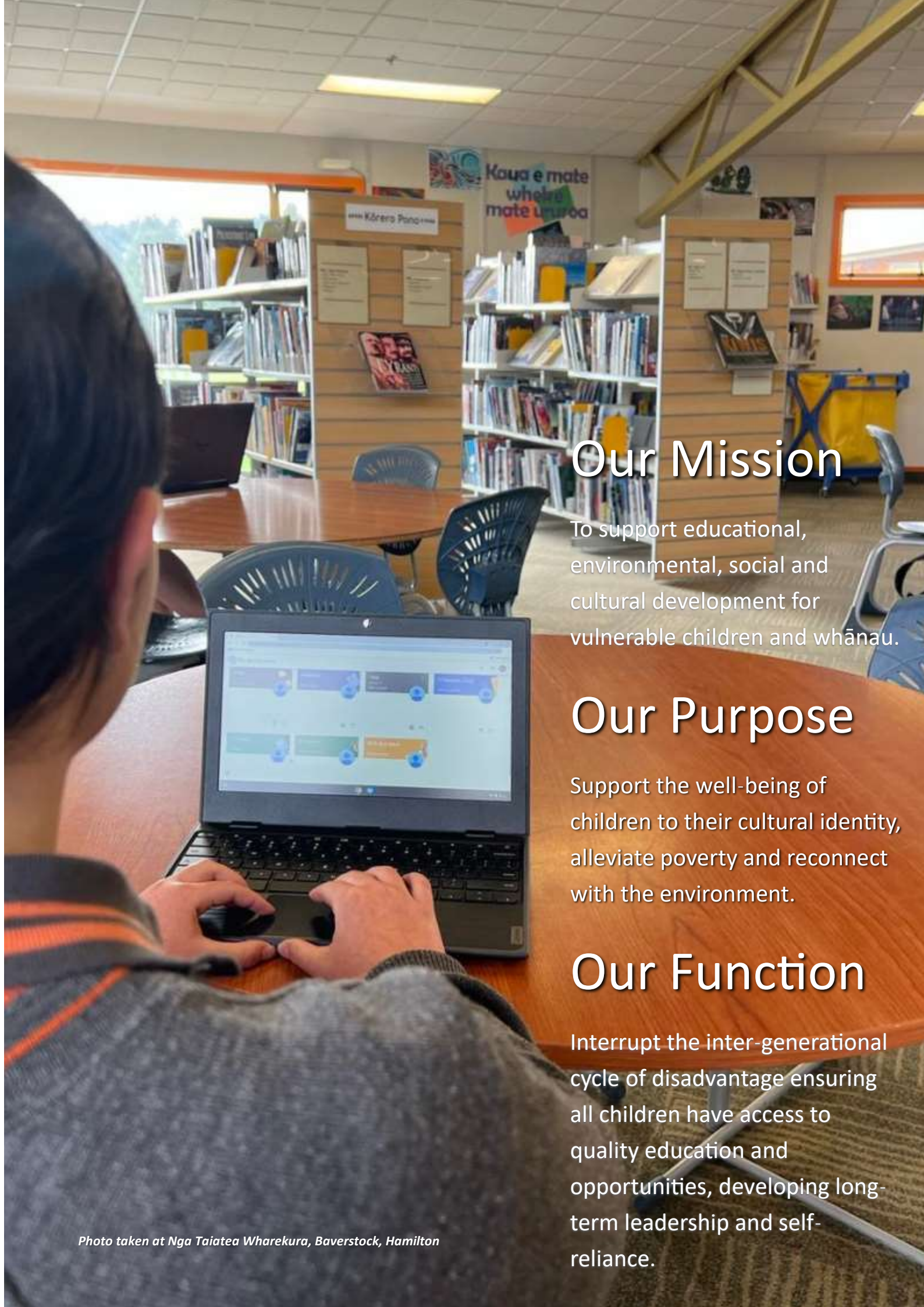
Employee/Contractor:

Relationship /Communications Consultant

Main sources of the entity's cash and resources:

1. Donations and grants
2. Sponsorship
3. Sale of Goods
4. Fundraising events





Our Mission

To support educational, environmental, social and cultural development for vulnerable children and whānau.

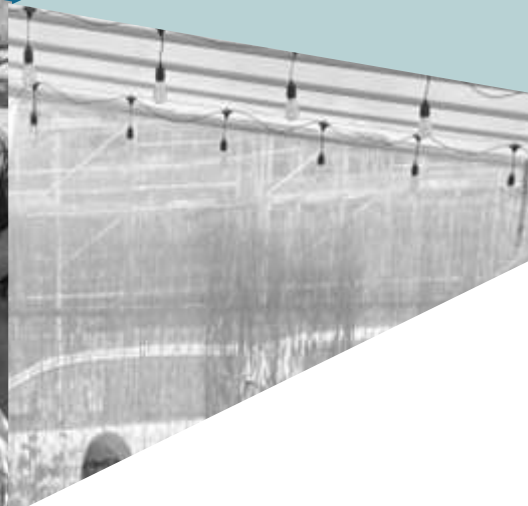
Our Purpose

Support the well-being of children to their cultural identity, alleviate poverty and reconnect with the environment.

Our Function

Interrupt the inter-generational cycle of disadvantage ensuring all children have access to quality education and opportunities, developing long-term leadership and self-reliance.

ANNUAL REPORT 2021 2022



TUI TRUST

*E hāpai ana I te tipu o ngā tamariki
Supporting the well-being of children*

For more information please visit
www.tuitrust.com

All rights reserved, September 2022[©]