

XMAS SPONSORS AND SUPPORTERS NEWSLETTER

DECEMBER 2022



TUI TRUST

E hāpai ana i te tipu o ngā tamariki
Supporting the well-being of children

Future looks brighter for local tamariki in 2023

Supporting tamariki with some at risk of disengaging from school

Kia koutou. Welcome to our last newsletter for 2022—we had an industrious and fruitful year and pleased to announce that with a grant from Trust Waikato we are supporting our first cohort of mostly Māori children, aged between 7-14 really struggling with reading and writing (English) starting January 2023. The children from Waingaro, Huntly, Waikato, Hamilton, Whatawhata, Cambridge, Raglan and Te Uku are years behind their peers for reasons ranging from: Covid-19 interruptions preventing or limiting access to specialist and academic support; neurodiverse, dyslexia, dyspraxia, dyscalculia, dysgraphia; financial costs associated with diagnosis and access to qualified tutors, practitioners, specialists and training. The scope of work in 2023 ranges from 1:1, 2:1, group, classroom, teacher professional development, training specific for the school or child's needs and whānau support. We will measure impact in two ways: 1. Practitioner literacy assessments; 2. Huber Social Impact Surveys for children and whānau. We are excited and hope to see the curve raise upwards over 2023 for these children as seen in many evidence-based research studies i.e. PHD thesis by [Dr Olwyn Johnson](#). At the other end, less scientific, but results equally as profound, a Hamilton child (graphic below) who in 2020 could barely write his own name despite three years at primary school, with limited, unsuccessful intervention attempts i.e. Reading Recovery; parents had no choice but to intervene and seek

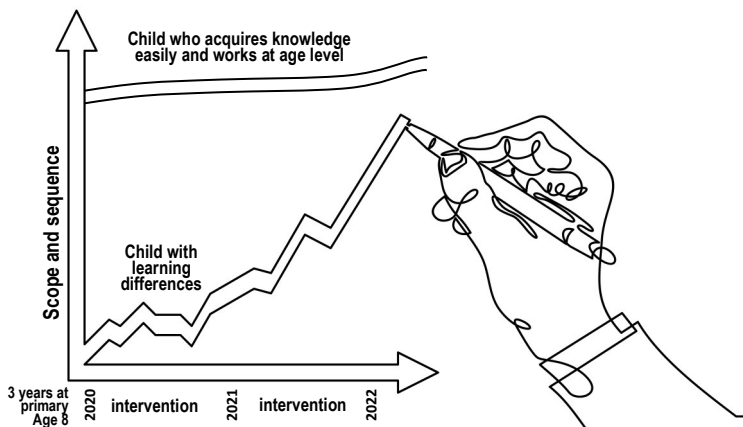


private tuition and professional assistance and the child has since taken off. Evidence-based training in 2023 will follow the [Orton Gillingham](#) Scope and Sequence, comprehensive word and language skills focused on the learning needs of the individual student. For older children this may mean going back to basics to learn language sounds and blends, most will catch up quickly.

Our 2023 Practitioners will design lessons and materials to work with students at the level they present by pacing instruction and the introduction of new materials to their individual strengths and weaknesses. Students with learning disabilities need to master the same basic knowledge about language and the relationship to our writing system as all who seek to become competent readers and writers. However, because of their disabilities/diversities, they need more help than most students in sorting, recognising, and organising the raw materials of language for thinking and use i.e. language elements that non-dyslexic learners acquire easily must be taught directly and systematically. With the correct intervention most of these children will catch up and thrive. We are grateful to Rongo Kirkwood, Dennis Turton, Trustees and team at Trust Waikato for their support and confidence as we navigate complex systems to find and help kids who need it the most.

Thank you to all our sponsors including the Lotteries Grant Board for funding for our *Creating a Literate Community Conference* in October which reached thousands of people; WEL Energy Trust for sponsoring technology including Chromebooks for Nga Taiatea Wharekura; PwC for sponsoring Moko Clubs Huntly and Ngāruawāhia Xmas parties for the 8th year in a row; HCC for administration support; D.V. Bryant for funding that supported Moko Club projects; Craig Barrett at Bakertilly Staples Rodway for sponsoring our accounting systems; thank you to our individual and anonymous sponsors, lastly to the amazing group of education practitioners and teachers around the country that volunteered their time and expertise to help us—thank you all for entrusting us with the responsibility to interrupt the inter-generational cycle of disadvantage ensuring all children have access to quality education and opportunities. We look forward to seeing some great results next year.

from the Tui Trust team, Piki Knap, Fonteyn Moses-Te Kani, Fran Mitchell, Elsa Wrathall and Lee Major, we wish you a very Merry Christmas and a safe, peaceful summer break.



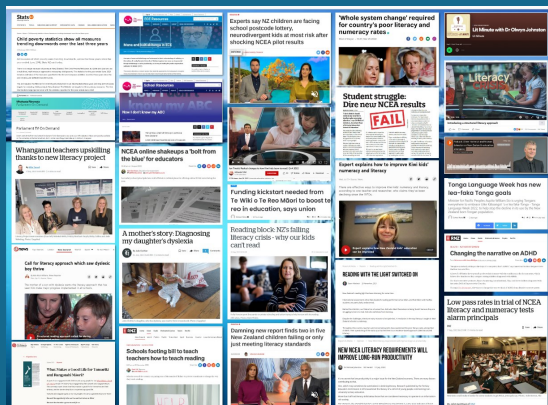
**Moko Club
Ngāruawāhia
Outdoor
Woodworking
Project supported
by D.V. Bryant Trust**



Photos: kids at Moko Club Ngāruawāhia enjoying outside woodworking

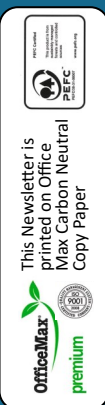
Moko Club Ngāruawāhia are building up their resources and establishing a new covered outdoor woodworking area. "Our tamariki love being outdoors," says Wendy Diamond, owner of Moko Club, "this allows them to be outdoors all year and learn new skills with woodworking tools as well as learning share, problem solving, perseverance and whanaungatanga." We will keep you updated as building progresses.

- This project is sponsored by D.V. Bryant Trust



Creating a Literate Community – our WHY?

Resilience is achieved, in part by receiving and having access to quality education, particularly for our education estranged, at-risk communities. Reading, writing and oral speech, good communication skills are at the heart of the regeneration of groups of communities building whānau and hapū capability. The wellbeing and quality of life for our people, whānau, hapū, communities and the vulnerable is strengthened. If there is any doubt that NZ is experiencing an on-going literacy crisis please click on the image to the left which will take you to our website (scroll half way down the page) for a collection of stories published over 2022. We must try to restore balance and support vulnerable whānau.



Thank you to our Sponsors and Supporters 2022



COGS
Hamilton City Council
Tania Simpson



Ministry of Social
Development
Ministry for Women



Cecilia Tarrant
Fonteyn Moses-Te Kani
Jan Gately



Michelle Alexander
PwC Hamilton Staff
Piki Knap



The Cake Detective
Anonymous Donations
Education Practitioners



Tui Trust Registered Charity CC10123. Level 4, BNZ Tower, 354 Victoria St, Hamilton
Email tuitrust@hotmail.com ph 027 232 2440 www.tuitrust.com

