

# XMAS SPONSORS AND SUPPORTERS NEWSLETTER DECEMBER 2024



TUI TRUST

## It's a wrap ... thank you to all those who supported us this year!

As we conclude 2024, we are pleased to share the final newsletter of what has been an industrious and productive year. With generous sponsor support we proudly facilitated literacy assistance for children aged 7–14 who face significant challenges in reading and writing Reo English. Our initiatives in 2024 encompassed a broad range of interventions, including 1:1 and 2:1 sessions, group (pictured below our last group training for 2024) and classroom support, teacher professional development, training tailored to specific school or child needs, and whānau engagement and assistance.

To measure the impact of our efforts, we will utilize two primary methods:

- Literacy assessments conducted by practitioners and teachers.
- Huber Social Impact Surveys to capture feedback from children, whānau, teachers and facilitators.



Looking ahead to 2025, we are optimistic about sustaining this positive momentum. We aim to see continued growth, with children feeling more confident, happier, and increasingly engaged in their learning journey.

Thank you to the Trustees and staff at Trust Waikato for your continued operations and project support. Thank you to the Lotteries Grant Board for supporting our projects; WEL Energy Trust for sponsoring technology including Chromebooks and laptops for children and teachers at Nga Taiatea Wharekura and Tui Trust technology upgrades; PwC Hamilton staff for sponsoring Moko Clubs Ngāruawāhia Xmas parties for the 8th year in a row; DV Bryant for funding that supported Moko Club Ngāruawāhia projects; Craig Barrett at Bakertilly Staples Rodway for sponsoring our accounting systems; thank you to our individual and anonymous sponsors and the amazing group of education practitioners and teachers around the country that volunteered their time and expertise to help us—thank you all for entrusting us with the responsibility to interrupt the inter-generational cycle of disadvantage ensuring all children have access to quality education and opportunities. Lastly thank you to the Ministry of Social Development for supporting our Maara Kai Garden to Table and Environment projects.

*We wish you a Merry Christmas and a safe, peaceful summer break, from the Tui Trust team,  
Tania Simpson, Piki Knap, Fonteyn Moses-Te Kani and Lee Major.*

Thank you to our major sponsors



Cecilia Tarrant  
Piki Knap  
Give-A-Little

TUI TRUST

Tui Trust Registered Charity CC10123. Level 3, Union Square, 192 Anglesea St, Hamilton  
Email [tuitrust@hotmail.com](mailto:tuitrust@hotmail.com) ph 027 232 2440 [www.tuitrust.com](http://www.tuitrust.com)



# Measuring the *Social Impact* of our work—wellbeing study



Well-being serves as the guiding measure, or lighthouse, providing an overall picture of how the community is doing. To better understand what individuals need to achieve their highest level of well-being, the second part of the framework focuses on measuring their capability and opportunity. Capability refers to the skills, knowledge, and resources individuals possess, while opportunity encompasses the external factors and environment that enable them to thrive. By

assessing well-being alongside these capability and opportunity factors, we can gain a deeper understanding of the key elements that most significantly impact the well-being of students and their families. This holistic approach allows us to identify and address the specific needs within the community, ensuring that our interventions effectively promote both personal and collective growth.

Tui Trust Interim Social Impact Report

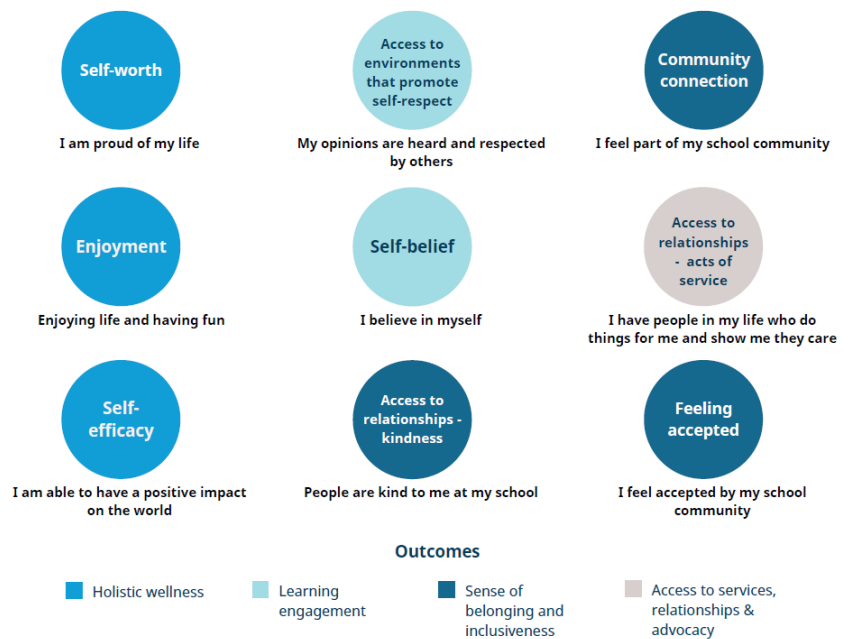
## Self-worth and Respect Drive Wellbeing for Tamariki

Analysis was undertaken to identify which of all factors measured had a meaningful relationship with wellbeing. If a young person scores highly in these factors, they are more likely to have high overall wellbeing, and thus be more satisfied with their life. These factors are called 'Predictors of Wellbeing.'

32 of 36 factors (89%) were found to have a moderate or strong relationship with wellbeing, indicating that Tui Trust is focused on factors that are closely linked to the wellbeing of students.

\*All above factors have a strong and positive relationship with wellbeing  $p < 0.001$ . Pearson correlation coefficients ( $r$ ) of the factors listed range from 0.909 to 0.811.

### Top Predictors of Wellbeing for Tamariki\*



## Cohort One

The graphs on this page show the collated literacy data for the five students in tutoring cohort one.

The results show clear improvement from when students started with the tutor to the end of year assessment.

